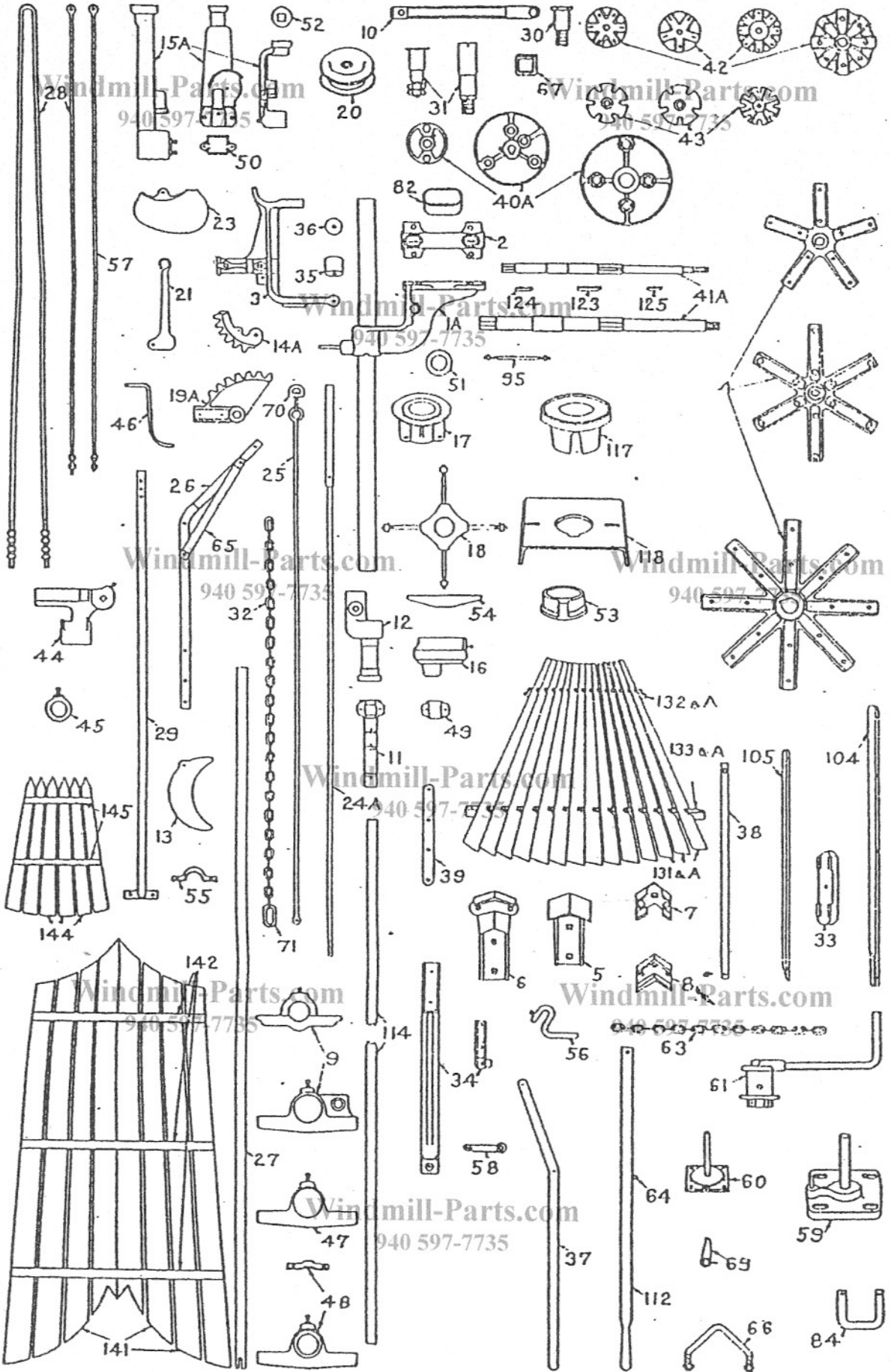


REPAIR CHART (69 WM) FOR 8 1/2' to 14' TYPE "P" ECLIPSE WINDMILLS



REPAIR CHART
8 1/2'-14 FT. TYPE "P" ECLIPSE WINDMILLS
69 WM

REPAIR PRICE LIST FOR TYPE "P" ECLIPSE WINDMILLS
BUILT SINCE 1888First column under each size mill gives number used on that mill, but PRICES are on
ONE PART ONLY in each case

Windmill-Parts.com

Windmill-Parts.com

Repair No.	NAME OF PART	940 597-7735							
		8 1/2'	10'	12'	14'				
1A	Pivot (babbitted), with cottor, set screw and nut.....	1	\$ 6.60	1	\$ 9.06	1	\$11.52	1	\$17.64
	Set screw with nut, pivot to side vane bar.....	1	.03	1	.12	1	.12	1	.12
1A-C	Pivot with cap, including 1A, 2 and bolts.....	1	8.04	1	10.52	1	13.28	1	20.82
2	Pivot cap (babbitted).....	1	1.20	1	1.20	1	1.56	1	2.88
	Bolt, pivot to pivot cap.....	4	.06	4	.06	4	.06	4	.08
3	Gate (with 35 and 36 on 10', 12' and 14'), and with set screws and bolt on all sizes.....	1	2.32	1	3.78	1	4.92	1	6.96
	Set screw, gate to No. 27 rudder vane bar.....	2	.06	2	.06	2	.06	2	.06
	Bolt, gate to No. 14A gear.....	1	.06	1	.06	1	.06	1	.06
3A-C	Gate, with No. 14A gear.....	1	2.80	1	4.32	1	5.76	1	8.40
4	Spilder, with set screw.....	1	2.52	1	3.30	1	4.62	1	4.98
	Set screw, spilder to No. 41A shaft.....	1	.06	1	.06	1	.06	1	.06
5	Outer front wheel clip.....	5	.18	0	.18	8	.18	8	.22
6	Outer back wheel clip.....	5	.18	0	.18	8	.18	8	.22
7	Inner front wheel clip.....	5	.08	0	.08	8	.08	8	.08
8	Inner back wheel clip.....	5	.08	0	.08	8	.08	8	.08
	Set of wheel clip bolts.....	1	.36	1	.42	1	.54	1	.78
9	Rudder vane bar inner end casting, with set screw	1	.32	1	.32	1	.42	1	.90
	Set screw for No. 9 casting.....	1	.06	1	.06	1	.06	1	.06
10	Wood pitman, with steel strap on one end.....	1	.42	1	.48	1	.54	1	.72
11	Swivel box.....	1	.78	1	.78	1	.94	1	1.20
11-C	Swivel box, with cap, including 11, 40 and bolts.....	1	1.14	1	1.14	1	1.36	1	1.72
	Bolt with washer, swivel box to pump pole.....	2	.06	2	.06	2	.06	3	.06
11A-C	Swivel box, with swivel, including 11-C and 12.....	1	1.80	1	1.80	1	2.20	1	2.98
12	Swivel, with set screw.....	1	.60	1	.60	1	.84	1	1.26
	Set screw, swivel to piston rod.....	1	.06	1	.06	1	.06	2	.06
13	Governor weight, with bolt.....	1	2.04	1	2.44	1	3.52	1	5.16
	Bolt, governor weight to weight arm.....	1	.06	1	.06	1	.06	1	.06
14A	Gate gear, with cap screw and bolt.....	1	.48	1	.54	1	.84	1	1.44
	Cap screw, gate gear to gate.....	1	.06	1	.06	1	.06	1	.10
	Bolt, gate gear to gear cover.....	1	.06	1	.06	1	.06	1	.06
15A	Upper piston guide (babbitted), with cottor pin (all sizes), and set screw on 8 1/2' and 14' only.....	1	1.44	1	2.34	1	2.94	1	5.52
	Set screw, upper piston guide to piston rod.....	1	.06					2	.06
15A-C	Upper piston guide, complete with 15A (all sizes), and with 50 and bolts on 10' and 12'.....	1	1.44	1	2.62	1	3.28	1	5.52
15C-C	Upper piston guide, with sheave, including 15A-C and 20.....	1	1.74	1	2.92	1	3.58	1	5.94
16	Lower guide, with set screw.....	1	.36	1	.36	1	.48	1	.94
	Set screw, lower guide to pivot.....	1	.06	1	.06	1	.06	1	.06
17	Collar (for four-post wood tower).....	1	.88	1	.88	1	1.20	1	2.46
18	Step, with nuts and washers (for four-post wood tower).....	1	1.08	1	1.08	1	1.32	1	2.52
19A	Weight arm gear, with rivets.....	1	.60	1	1.08	1	1.56	1	2.94
19A-C	Weight arm gear, complete, including 19A, 21, 20C and 32.....	1	2.10	1	2.68	1	3.68	1	6.28
20	Sheave.....	1	.30	1	.30	1	.30	1	.44
21	Weight arm link.....	1	.22	1	.22	1	.30	1	.44
23	Gear cover.....	1	.30	1	.48	1	.66	1	1.00
24A	Piston rod.....	1	1.80	1	1.92	1	2.52	1	4.44
25	Pull-out rod, with No. 70 swivel.....	1	.30	1	.36	1	.36	1	.60
26	Weight arm.....	1	.82	1	.90	1	1.32	1	1.86
20-C	Weight arm, with No. 65 brace.....	1	1.02	1	1.08	1	1.54	1	2.10
27	Rudder vane bar.....	1	1.80	1	2.04	1	3.36	1	4.32
28	Top truss rod, with nuts.....	1	.42	1	.58	1	.58	1	.76
29	Side vane bar.....	1	1.32	1	1.52	1	1.68	1	3.54
30	Pitman to piston rod stud pin.....	1	.36	1	.44	1	.48	1	.52
31	Wrist pin, with nuts (all sizes), and No. 67, washer and cottor on 14' only.....	1	.58	1	.70	1	.70	1	1.08
	Nut for wrist pin.....	2	.06	2	.06	2	.06	2	.08
32	Weight arm chain, with No. 71 link.....	1	.28	1	.30	1	.30	1	.80
33	Counterpoise weight.....	1	.80	1	.80	1	.80	1	1.12
	Bolt with washer, No. 33 weight to wheel arm.....	1	.06	1	.06	1	.06	1	.06
34	Pump connection.....	1	.22	1	.22	1	.22	1	1.26

REPAIR PRICE LIST FOR TYPE "P" ECLIPSE WINDMILLS BUILT SINCE 1888

First column under each size mill gives number used on that mill, but PRICES are on
Windmill-Parts.com ONE PART ONLY in each case Windmill-Parts.com

Repair No.	NAME OF PART	940 597-7735			
		8 1/2'	10'	12'	14'
35	Bolt with washer, No. 34 connection to pump pole.....	2 \$.06	2 \$.06	2 \$.06	2 \$.06
38	Rubber bumper for No. 3 gate.....		1 .18	1 .30	1 .40
	Rubber bumper washer.....		1 .00	1 .06	1 .06
37	Bolt, rubber bumper to gate.....		1 .04	1 .04	1 .01
37-C	Out-gear lever, with rivets (for steel tower).....	1 .54	1 .54		
	Out-gear lever, complete with 37, 50 and rivets (for steel tower).....	1 .84	1 .84		
38	Wheel arm steel brace.....	6 .28	6 .30	8 .30	
30	Pump pole splice irons. Per pair.....	1 .20	1 .20	1 .20	1 .42
40A	Bolt, No. 39 splice iron to pump pole.....	4 .06	4 .06	4 .06	4 .06
	Face plate, with set screw.....	1 .00	1 1.02	1 2.52	1 3.78
41A	Set screw, face plate to shaft.....	1 .00	1 .00	1 .00	1 .00
	Main shaft, (includes nuts and cotter on 8 1/2', 10' and 12' only).....	1 3.30	1 3.60	1 4.08	1 6.78
41A-C	Nut for main shaft.....	2 .08	2 .08	2 .08	
	Main shaft, complete (with 4, 40A, 41A, 123 and 124 on all sizes) and (42 and 125 on 14' only).....	1 6.92	1 8.98	1 11.35	1 17.14
42	Brace plate.....	1 .34	1 .36	1 .40	1 1.32
43	Brace plate cap.....	1 .30	1 .30	1 .40	
44	Brake shoe with set screw.....	1 .42	1 .48	1 .80	1 1.20
44-C	Set screw, brake shoe to brake lever.....	1 .06	1 .06	1 .06	1 .06
45	Brake shoe, with No. 46 brake lever.....	1 .72	1 .78	1 1.24	1 1.98
	Brake collar, with set screw.....	1 .16	1 .10	1 .18	1 .24
	Set screw, brake collar to side vane bar.....	1 .00	1 .00	1 .00	1 .00
46	Brake lever.....	1 .30	1 .30	1 .42	1 .72
47	Rudder vane bar middle casting, with set screw.....				1 .66
	Set screw, No. 47 to rudder vane bar.....				1 .00
48	Rudder vane bar outer end clip or casting (with set screw for 14' only).....	1 .12	1 .12	1 .18	1 .60
40	Set screw, No. 48 casting to rudder vane bar.....				1 .06
50	Swivel box cap.....	1 .26	1 .20	1 .32	1 .42
	Bolt, swivel box cap to swivel box.....	2 .00	2 .06	2 .06	2 .06
	Upper piston guide cap.....		1 .18	1 .24	
51	Bolt, No. 50 cap to upper piston guide.....		2 .06	2 .06	
52	Pivot pipe washers.....	3 .00	3 .06	3 .06	3 .06
	Upper piston guide washer.....	1 .10	1 .10	1 .10	1 .18
53	Step bushing (for four-post steel tower).....	1 .10	1 .10	1 .36	
54	Tower blocks (for wood tower).....	4 .12	4 .12	4 .16	4 .24
55	Side vane staple.....	1 .00	1 .06	1 .10	1 .18
56	Out-gear lever bracket, with set screw, (for steel tower).....	1 .30	1 .30		
57	Set screw, No. 56 bracket to tower post.....	1 .00	1 .00	1 .00	
	Side truss rod, with nuts.....		1 .60	1 .60	
58	Pump connection pin, with leather cotter.....	1 .12	1 .12	1 .12	1 .12
59	Out-gear reel base (for either wood or steel tower for 8 1/2', 10' and 12') and (for steel tower only for 14').....	1 .54	1 .54	1 .78	1 1.98
	Set screw, No. 59 reel base to tower post.....				1 .12
60	Lag screw, No. 59 or 60 reel base to tower post (for wood tower only).....	4 .00	4 .00	4 .00	4 .00
61	Out-gear reel base (for wood tower).....				1 2.08
	Out-gear reel and handle, with cap screw and washer (for either wood or steel tower).....	1 .54	1 .54	1 1.02	1 2.46
61-C	Cap screw with washer, No. 61 to No. 63 chain.....	1 .00	1 .00	1 .08	1 .08
	Out-gear reel (for steel tower) complete with 59, 61, 63, 66 and 69.....	1 1.02	1 1.62	1 2.40	1 5.28
61A-C	Out-gear reel (for wood tower) complete (with 61, 63, 66 and lag screws on all sizes) also (No. 59 for 8 1/2', 10' and 12' only) and (No. 60 for 14' only).....	1 1.54	1 1.54	1 2.32	1 5.58

REPAIR PRICE LIST FOR TYPE "P" ECLIPSE WINDMILLS
BUILT SINCE 1888

Windmill-Parts.com

Windmill-Parts.com

First column under each size mill gives number used on that mill, but PRICES are on ONE PART ONLY in each case

Repair No.	NAME OF PART	8 1/2'		10'		12'		14'	
		QTY	PRICE	QTY	PRICE	QTY	PRICE	QTY	PRICE
63	Out-gear reel chain (for either wood or steel tower).....	1	.10	1	.10	1	.20	1	.60
64	Out-gear lever staple (for wood tower).....	1	.12	1	.12	1	.12	1	.12
65	Weight arm brace.....	1	.18	1	.18	1	.22	1	.22
66	Out-gear reel base "U" bolts, with nuts (for steel tower)	2	.16	2	.16	2	.16		
67	Wrist pin square washer.....							1	.18
69	Out-gear reel pawl (for wood or steel tower).....	1	.12	1	.12	1	.12	1	.18
70	Pull-out rod swivel.....	1	.08	1	.08	1	.08	1	.08
71	Weight arm chain link.....	1	.00	1	.00	1	.06	1	.06
82	Oil cup cover.....	2	.00	2	.00	2	.00	2	.00
83	Pull-out wire.....	1	.40	1	.40	1	.40	1	.40
84	"U" ladder step (for steel tower).....	1	.18	1	.18				
85-C	Bundle of vane irons, including (No. 24A, 25, 27, 28 and 29 on all sizes), and (with set of 38 on 8 1/2', 10' and 12') and (67 on 10' and 12' only).....	1	7.02	1	8.74	1	11.50	1	14.40
86-O	Box of parts (for four-post wood tower), including 3A-C, 5, 6, 7, 8, 9, 10, 11A-C, 13, 15C-C, 16, 17, 18, 23, 30, 31, 33, 34, 39, (42 and 43 for 8 1/2', 10' and 12' only), 44-C, 45, 47, 48, 51, 52, 54, 55, 58, 82, 95, bolts, etc.....	1	21.72	1	25.08	1	32.70	1	49.44
87-O	Box of parts (for four-post steel tower), including 3A-C, 5, 6, 7, 8, 9, 10, 11A-C, 13, 15C-C, 16, 23, 30, 31, 33, 34, 39 (42 and 43 for 8 1/2', 10' and 12' only), 44-C, 45, 47, 48, 51, 52, 55, 58, (61-C for 12' and 14' only), 82 (84 for 8 1/2' and 10' only), 117, 118, bolts, etc.....	1	19.48	1	24.00	1	33.36	1	50.40
95	Tower rod, with nuts and washers (for wood tower)....	4	.10	4	.10	4	.10	4	.22
104	Wheel arm, with arm to spider bolts.....	5	.42	6	.42	8	.60	8	1.02
	Bolt, wheel arm to spider.....	10	.00	12	.00	16	.00	16	.00
105	Wheel arm brace, with bolts.....							8	.64
	Bolt (short), wheel arm brace to brace plate.....							8	.00
	Bolt (long), with washer, wheel arm brace to wheel arm.....							8	.00
112	Out-gear lever, with No. 64 staple (for wood tower).....	1	.00	1	.60	1	.60	1	.80
	Bolt with washer, out-gear lever to wood tower post..	1	.00	1	.00	1	.06	1	.00
114	Pump pole.....	2	.00	2	.90	2	.00	2	2.16
114-C	Set of pump poles, with splice irons, including 30, 114 and bolts.....	1	2.32	1	2.32	1	2.32	1	4.04
117	Collar (for four-post steel tower).....	1	.34	1	.34	1	.72	1	5.40
118	Stop, including No. 53 bushing on 8 1/2', 10' and 12' only (for four-post steel tower).....	1	.58	1	.58	1	1.20	1	3.00
123	Spider key.....	1	.03	1	.03	1	.03	1	.10
124	Face plate key.....	1	.08	1	.03	1	.03	1	.10
125	Brace plate key.....							1	.08
131	Wheel fan (wide).....	65	.22	72	.22	80	.24	90	.28
131-O	Wheel section, with wide fans, including 131, 132 and 133	5	2.52	6	2.52	8	2.52	8	4.48
131A	Wheel fan (narrow).....			84	.22	96	.24		
131A-C	Wheel section, with narrow fans, including 131A, 132A and 133A.....			6	2.52	8	2.52		
132	Wheel short girt, for wide fan.....	5	.30	6	.30	8	.30	8	.36
132A	Wheel short girt, for narrow fan.....			6	.30	8	.30		
133	Wheel long girt, for wide fan.....	5	.44	6	.40	8	.40	8	.64
133A	Wheel long girt, for narrow fan.....			6	.40	8	.40		
141	Rudder vane slat.....	8	.72	8	.72	8	.98	0	1.20
141-C	Rudder vane, with 141, 142 and bolts.....	1	5.70	1	5.70	1	7.80	1	10.50
	Bolt, rudder vane to vane bar casting and oilp.....	3	.00	3	.00	3	.00	0	.00
	Bolt, rudder vane to vane bar casting and truss rod.....	1	.00	1	.00	1	.00		
141A-C	Rudder vane and side vane, including 141-C and 144-C..	1	6.06	1	6.06	1	9.42	1	13.02
142	Rudder vane cross bar.....	3	.40	3	.40	4	.40	5	.42
144	Side vane slat.....	6	.26	6	.26	7	.26	7	.32
144-C	Side vane, including 144, 145 and bolts.....	1	1.20	1	1.26	1	1.62	1	2.52
	Bolt, with washer, side vane to vane bar.....	2	.04	2	.04	2	.04	2	.04
145	Side vane cross bar.....	2	.20	2	.20	2	.30	2	.30

REPAIR PRICE LIST FOR TYPE "P" ECLIPSE WINDMILLS
BUILT PREVIOUS TO 1888

Windmill-Parts.com

Windmill-Parts.com

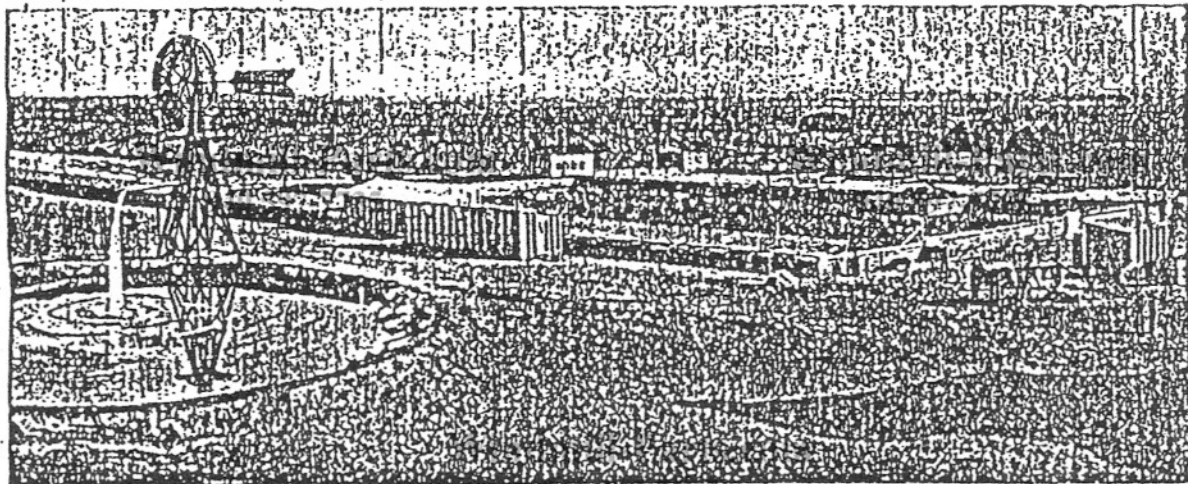
First column under each size mill gives number used on that mill, but PRICES are on ONE PART ONLY in each case

Important "Old Style" Parts for Type "P" Eclipse Mills built previous to 1888, which are different from Present Style Type "P" Mills built since 1888.

Repair No.	NAME OF PART	Windmill-Parts.com			
		8 1/2'	10'	12'	14'
1	Pivot (babbitted), with cotter, set screw and nut.....	1 \$ 6.06	1 \$ 9.00	1 \$11.52	1 \$17.04
1-C	Pivot with cap, including 1, 2 and bolts.....	1 8.04	1 10.52	1 13.28	1 20.82
3-C	Gate, with No. 14 gear.....	1 3.04			
14	Gate gear, with No. 23 cover, cap screw and bolt.....	1 .76			
15	Upper piston guide (babbitted), with cotter pin (all sizes), and set screw for 14' only.....		1 2.34	1 2.94	1 5.52
15-C	Upper piston guide, complete with 15 (all sizes), and with 50 and bolts on 10' and 12'.....		1 2.02	1 3.28	1 5.52
15B-C	Upper piston guide, with sheave, including 15-C and 20.....		1 2.92	1 3.58	1 5.94
19	Weight arm gear, with rivets.....	1 .60	1 1.08	1 1.56	1 2.94
19-C	Weight arm gear, complete, including 10, 21, 20-C and 32.....	1 2.10	1 2.68	1 3.08	1 6.28
24	Piston rod.....		1 1.92	1 2.52	1 4.44
40	Face plate (short stroke).....		1 1.44	1 1.86	1 3.08
41	Main shaft.....	1 1.92			
41-C	Main shaft, complete, including 4, 123 and 124 (all sizes) and (with 40-A and 41 on 8 1/2') (40 and 41A on 10', 12' and 14') and (42 with 125 on 14').....	1 5.56	1 8.50	1 10.72	1 16.42

Windmill-Parts.com

940 597-7735



A 14-ft. Eclipse on 20-ft. Tower, on Geo. B. Webster's Ranch, near Carlsbad, New Mexico.

REPAIR PRICE LIST No. 9108B

940 597-7735

Windmill-Parts.com

Eclipse

Windmills, Type "P"

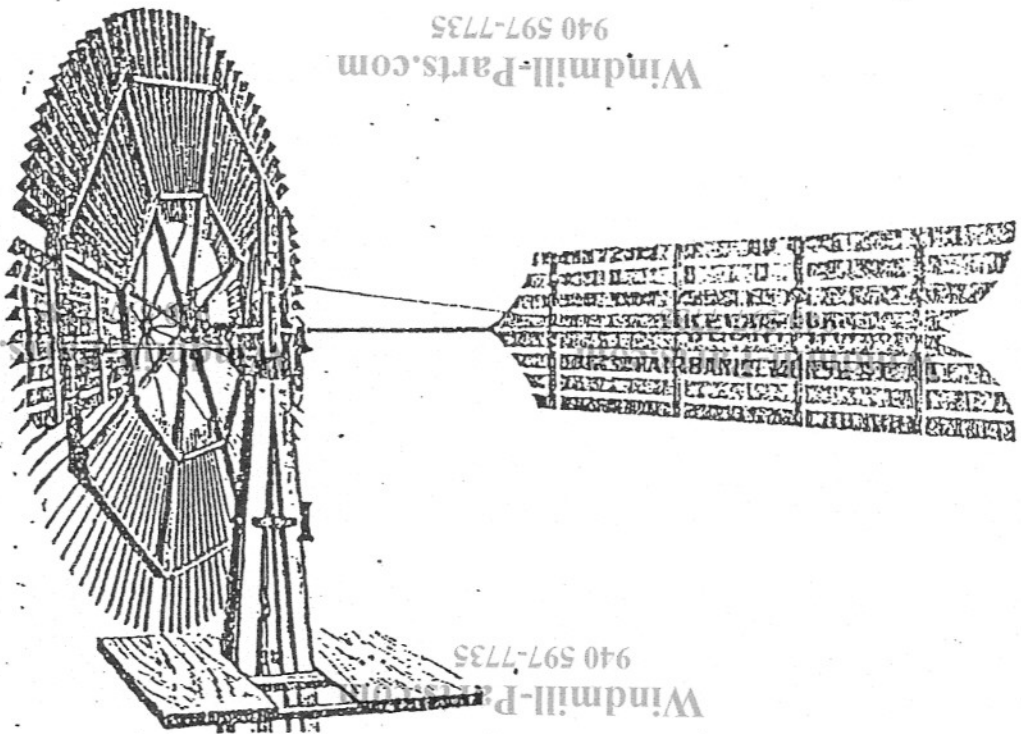
940 597-7735

940 597-7735

Windmill-Parts.com

8 1/2 ft. to 14 ft.

Windmill-Parts.com



940 597-7735

Windmill-Parts.com

940 597-7735

Windmill-Parts.com

(Fig. W6068)

940 597-7735

Windmill-Parts.com

940 597-7735

Windmill-Parts.com

FAIRBANKS, MORSE & CO.

(INCORPORATED)

(Copyright, 1916, by Fairbanks, Morse & Co.)