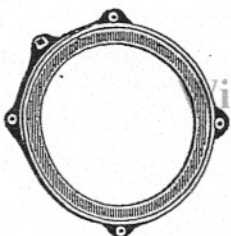


REPAIR PARTS FOR TEN-FOOT VANELESS MILL "A" STYLE

A 17



A 19



A 21



A 2L



A 3L



A 126



A 124



A 91



A 21 1/2



A 128



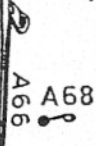
D 43



A 64



A 69



A 79



A 100



A 78



A 77



A 101



940 597-7735

58



A 11



A 55



940 597-7735

E 20



59



A 15



A 10



A 5



A 60



A 7



A 106



A 67



A 61



A 24 1/2



A 97



A 1



A 87



A 2R



A 2



A 86



A 120



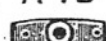
A 88



A 23 A



A 76



A 25



A 98



A 54



A 23 1/2



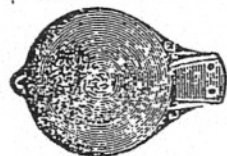
A 23



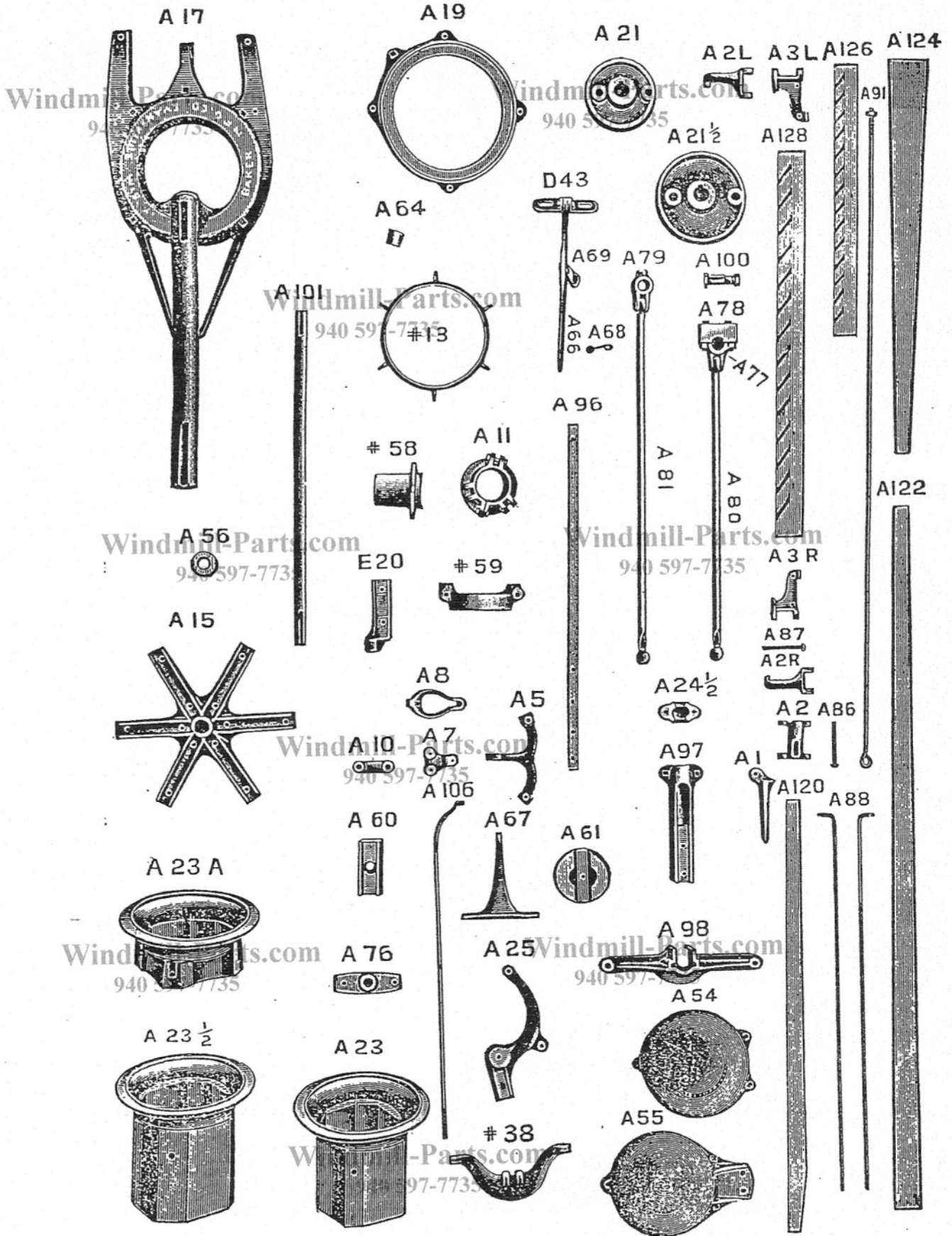
38



A 55



REPAIR PARTS FOR TEN-FOOT VANELESS MILL "A" STYLE



REPAIR LIST FOR TEN-FOOT VANELESS MILL, A STYLE

Windmill-Parts.com

Windmill-Parts.com

Symbol	10 597-7735	Price	Wt.	Symbol	940 597-7735	Price	Wt.		
A1	Wood a r m casting	\$0.20	1	A67	Truss casting	.30	2		
A2	Shipper casting	.30	1.2	A68	W i r e swivel ball	.20	.2		
A2R	Shipper coupling, R	.20	.8	A69	Wire swivel ball socket	.10	.2		
A2L	Shipper coupling, L	.20	.8	A76	Tower plate	.10	1.2		
A3R	Section casting, right	.20	.7	A77	Iron pitman box, short stroke	.20	1		
A3L	Section casting, left	.20	.7	A78	Wood pitman box, short stroke	.20	1		
A5	Rod end	.40	1.5	A79	Brass pitman box, long stroke	1.00	1		
A7	Link	.20	.8	A80	Steel pitman bar, short stroke	1.00	4		
A8	Fulcrum	.30	1	A81	Steel pitman bar, long stroke	1.20	5		
A10	Sleeve pitman	.10	.5	A86	Joint pins drilled	.04	.2		
A11	Outer sleeve, two pieces	1.00	5	A87	Joint pins, not drilled	.04	.2		
No. 13	Roller ring	.30	2	A88	Shipper rods	.20	1.3		
A14	Sleeve saddle, two pieces	.60	4	A91	Truss rods	.30	2		
A15	Wheel spider	2.00	13	A96	Weight lever	.40	3.6		
A17	Wheel arm	7.00	53	A97	Swivel with cap	.80	4		
A19	Wheel a r m ring	.90	7	A98	Swivel guide	.60	5		
K20	Pump attachment	.60	2.3	A100	Wrist pin and nut	.60	.9		
A21	Crank, short stroke	1.00	6	A101	Main shaft	1.20	9		
A21 1/2	Crank, long stroke	1.20	8	A106	Wrought connecting rods	.20	1.7		
A23	Tower casting wood tower, short stroke	3.00	29	A120	Arm without irons	.50	2		
A23 1/2	Tower casting wood tower, long stroke	3.00	30	A122	B a l a n c e weight arm	.60	3		
A23A	Tower casting steel tower	2.00	18	A124	Fans	.10	1		
A24 1/2	Swivel cap	.10	.5	A126	Rims, short	.20	1		
A25	Weight lever	.50	3.8	A128	Rims, long	.56	2		
No. 38	Weight lever yoke	.60	3.5	Completed Parts					
D43	Shipper lever fulcrum	.20	1.5	Arm with irons A1 and A2				1.00	5
A54	Balance ball, upper half	1.00	11	Balance arms and truss rods				1.80	11
A55	Balance ball, lower half	1.20	13	Balance ball				2.20	24
A56	Brass washer, 1 3/16-inch	.20	.2	Box packed for steel tower				21.00	127
No. 58	Inner sleeve, two pieces	.70	4.8	Box packed for wood tower				22.00	
No. 59	Same as A14			Mill head without shipper				20.00	147
A60	Counter balance weight	.50	5.4	Mill head for wood tower				21.00	160
A61	Governor wt.	.90	9	Section with irons				3.00	11
A64	Rollers	.10	.2	Shipper, complete				1.60	12
A66	Shipper lever	.40	3	Shipper lever complete				1.00	5
				A5-7-8-10 riveted				1.00	4
				Pitman, short stroke				1.40	6
				Pitman, long stroke				2.20	6

REPAIR LIST FOR TWELVE-FOOT VANELESS MILL

Symbol	Description	Price	Wt.	Symbol	Description	Price	Wt.
A2	Shipper casting	\$0.30	1.2	A63	Pump pole guide	.10	1
A2½	Brace washer	.10	.2	A65	Rollers	.10	.5
A2R	Shipper coupling, R	.20	.8	A66	Shipper-lever	.40	3
A2L	Shipper coupling, L	.20	.8	A68	Wire swivel ball	.20	.2
A3R	Section casting, R	.20	.7	A69	Wire swivel ball socket	.10	.2
A3L	Section casting, L	.20	.7	A76	Tower plate	.10	1.2
A4	Wood-arm casting	.20	1.3	A79	Brass pitman box, long stroke	1.00	1
A6	Rod end	.40	1.4	No. 81	Roller ring	.40	3
A7	Link	.20	.8	A82	Steel pitman bar, long stroke	1.40	6
A9	Fulcrum	.60	2.7	A83	Brass washer for pitman O. S. L. S.	.20	.1
A10	Sleeve pitman	.10	.5	A86	Joint pins, drilled	.04	.2
A12	Outer sleeve, 2 pieces	1.00	5.4	A87	Joint pins, not drilled	.04	.2
A13	Brace spider	.60	4.2	A89	Shipper rods	.20	1.5
A14	Sleeve saddle, 2 pieces	.60	4	A92	Truss rods	.50	4.2
A16	Wheel spider	3.00	20	A94	Truss standards	.20	1
A18	Wheel arm	10.00	78	A96	Weight lever	.40	3.6
A20	Wheel arm ring	1.40		A99	Swivel guide	.70	5.5
A22	Crank, short stroke	1.20	8	A100	Wrist pin and nut	.60	.9
A22½	Crank, long stroke	1.50	10	A102	Main shaft	2.50	18
No. 24	Tower casting, wood tower	4.00	36	A107	Wrought connecting rods	.20	2
No. 24A	Tower casting for steel tower	2.50	22	A121	Arms without irons	.60	3.2
A24	Swivel with cap	.90	4.5	A123	Balance weight arms	.70	5.3
A24½	Swivel cap	.10	.5	A125	Fans	.10	.5
A25	Weight lever	.50	3.8	A127	Rims, short	.20	.8
No. 38	Weight lever yoke	.60	3.5	A129	Rims, long	.90	2.5
D43	Shipper-lever fulcrum	.20	1.5	A130	Wheel brace	.20	1
A54	Ball, upper half	1.00	11	W	Pump attachment	.30	2.3
A55	Ball, lower half	1.20	13	Completed Parts			
A57	Brass washer, 1-7-16 inch	.20	.2	Arms with irons	1.10	7	
No. 58	Inner sleeve, 2 pieces	.70	4.8	Balance arms and truss rods	2.40	17	
No. 59	Same as A14	---	---	Balance ball	2.20	24	
A60	Counter-balance weight	.50	5.4	Mill box packed	30.00	185	
A62	Governor weight	1.30	13	Mill head, without shipper	30.00	220	
				Section, with irons	3.00	11	
				Shipper, complete	1.50	12	
				A6, 7, 10 riveted	.70	3	
				A9 with 2 (A6-7-10)	2.00	8	
				Pitman with box	2.40	7	